

ACCESO AO 1º CURSO DE GRAO PROFESIONAL CURSO 2024/2025

PROBA DE RITMO E CLAVE DE FA EN 4ª

♩ = 60

♩ = ♩

♩ = ♩

♩ = ♩

ENTOACIÓN (empregando como referencia o la = 440hz)

amdor

CEMU Profesional
O ROSAL

Centro Autorizado Profesional Agrupación Musical do Rosal
Código Centro: 36025232
Rúa Couso, s/n Auditorio do Rosal
36770 O Rosal (Pontevedra)

Telfs.: 986.626.311 / 609.866.792
cemu.profesional.rosal@edu.xunta.gal
info@agrupacionmusicaldorosal.com

DITADO



ACCESO AO 1º CURSO DE GRAO PROFESIONAL CURSO 2024/2025

PROBA DE TEORÍA

Nome e apelidos: _____

1. Indica as tonalidades (maior e menor) correspondentes ás seguintes armaduras: (1 pto.)

a) 5#

b) 3b

c) 4b

d) 6#

e) 2b

f) 6b

2. Indica as armaduras das seguintes tonalidades (M=maior; m=menor): (1pto)

a) Re m

b) Mi m

c) Fa M

d) Sol m

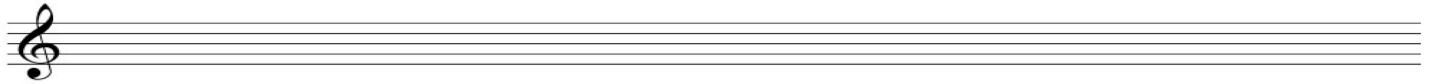
e) Si m

f) Mib m


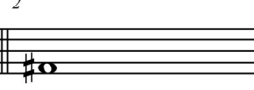
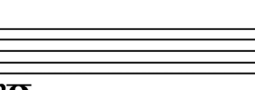
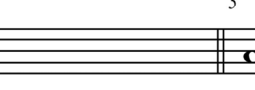
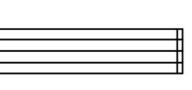
3. Indentifica os seguintes intervalos (número e especie; ex, 8ª A): (1 pto.)

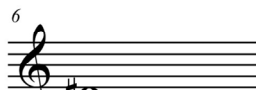
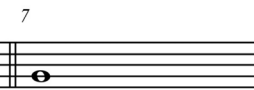
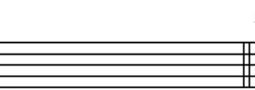
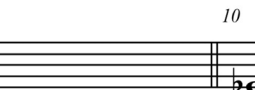
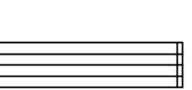


4. Inverte os intervalos do exercicio anterior e indica número e especie: (1 pto.)



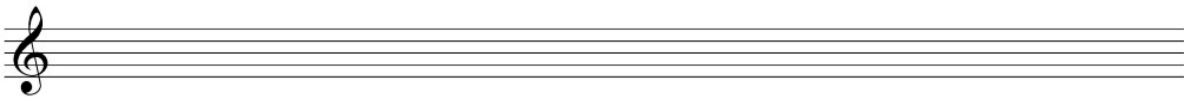
5. Constrúe os intervalos que se indican: (1.5 ptos.)

1	2	3	4	5
				
quinta xusta asc.	sexta menor asc.	cuarta aumentada asc.	terceira menor desc.	séptima menor desc.

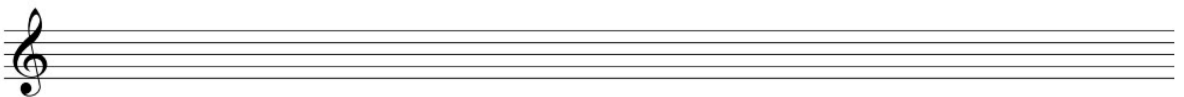
6	7	8	9	10
				
oitava xusta asc.	terceira menor asc.	treceira maior asc.	cuarta xusta desc.	quinta aumentada asc.

6. Escribe as seguintes escalas: (1.5 ptos.)

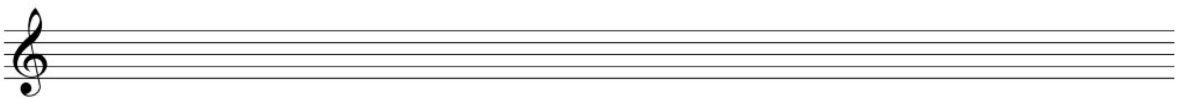
Re menor armónica



Do menor melódica



Mib Maior mixolidia (4º tipo)



7. Forma os acordes que se indican a continuación: (1.5 pto.)

A musical staff in treble clef with a key signature of one sharp (F#). It contains five whole notes. Below the staff, the following chord names are written: Pm, 5ºDis., 7ºD., PM, and 5ªAum.

8. Indica, nos espazos marcados, os graos e a cadencia correspondente (auténtica, plagal, semicadencia ou rota). Indica tamén a tonalidade do fragmento: (1.5 pts.)

Tonalidade: _____

A musical score for a fragment in G major (one sharp) and 6/8 time. It consists of three systems. The first system has a melody in the treble clef and piano accompaniment in the bass clef. The second system continues the melody and accompaniment. The third system concludes the fragment with a final cadence. The piano accompaniment features a rhythmic pattern of eighth notes and chords.

Graos _____
Cadencia _____